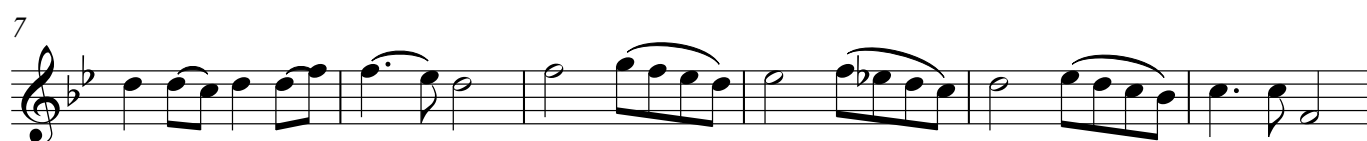


# Gloria in Excelsis Deo

C-Stimme hoch


Hornklasse Julia Benz



# Gloria in Excelsis Deo


Gesang/C-Stimme tief

Hornklasse Julia Benz




En-gel auf den Fel - der sin - gen, stim - men an ein himm - lisch Lied, und im Wi - der -  
Les an - ges dans nos cam - pa - gnes ont en - ton - né l'hym - ne des cieux. Et l'e - ch de -

6



hall er - klin - gen auch die Ber - ge jauch - zen mit: *Glo* - - -  
nos mon - ta - gnes re - dit ce chant mé - lo - di - eux:

11



- - - *ri - a* in *Ex cel - sis - De - o* *Glo* -

16



- - - - - *ri - a* in *ex - cel - sis De - o*

# Gloria in Excelsis Deo

Bb-Stimme

Hornklasse Julia Benz

7

12

17

# Gloria in Excelsis Deo

E♭-Stimme

Hornklasse Julia Benz

7

13

17

# Gloria in Excelsis Deo

F-Stimme

Hornklasse Julia Benz



Musical score for F-voice part of Gloria in Excelsis Deo, consisting of four staves of music. The score is written in treble clef with a key signature of one flat (B-flat). The first staff contains measures 1-6. The second staff starts at measure 7. The third staff starts at measure 12. The fourth staff starts at measure 17 and ends with a double bar line. The music features a mix of eighth, quarter, and half notes, with some slurs and ties.

# Gloria in Excelsis Deo

C-Stimme Bass

Hornklasse Julia Benz

