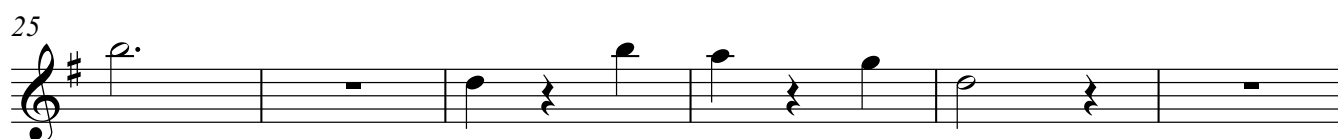
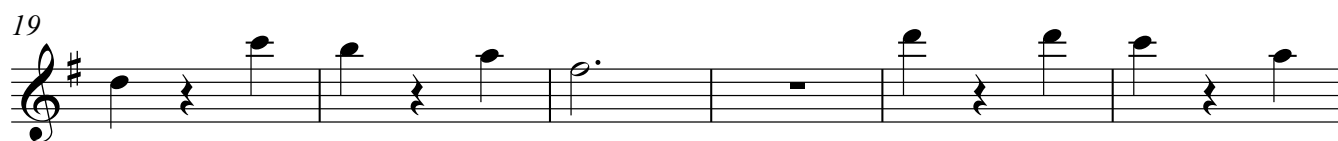
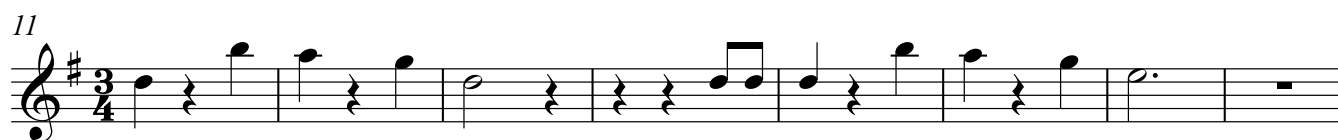
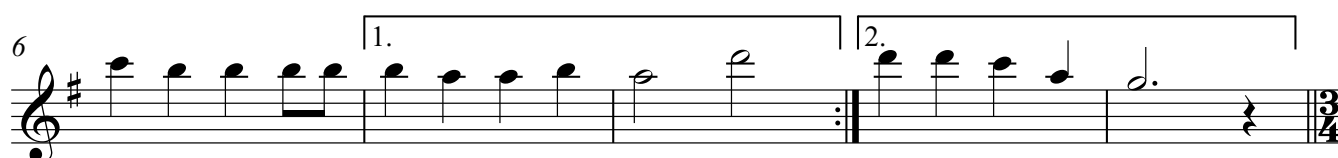
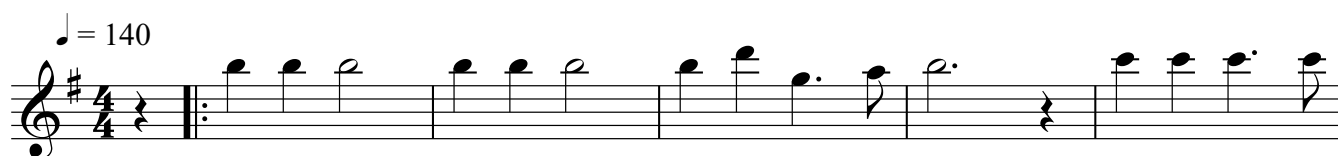


C-Stimme hoch

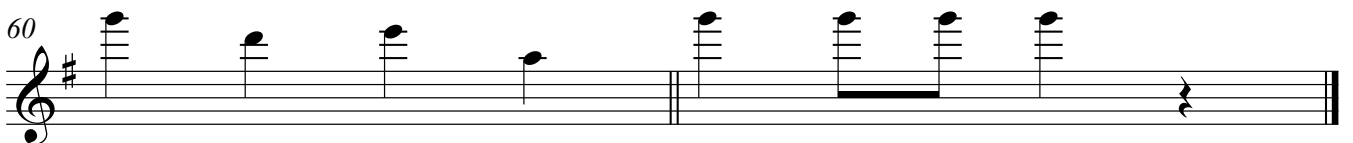
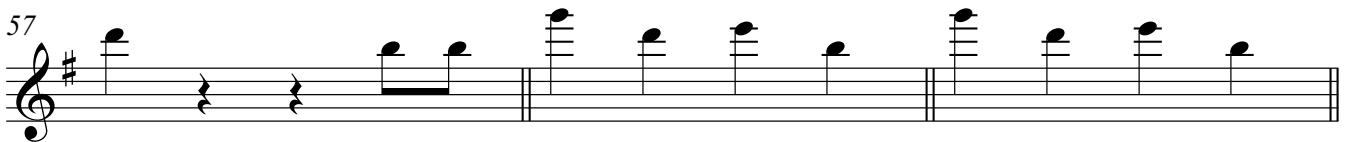
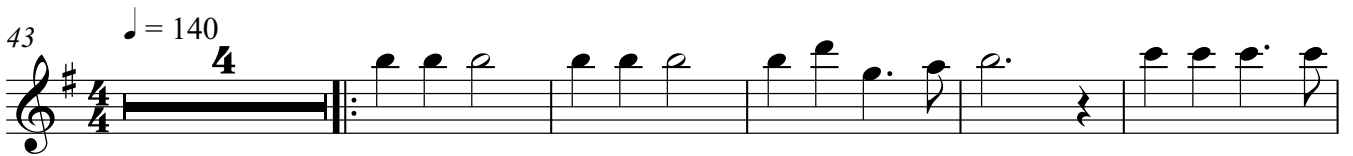
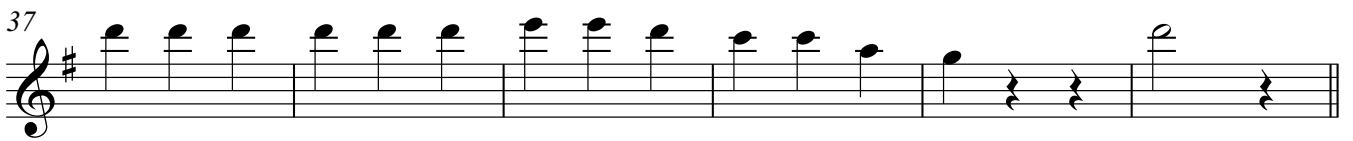
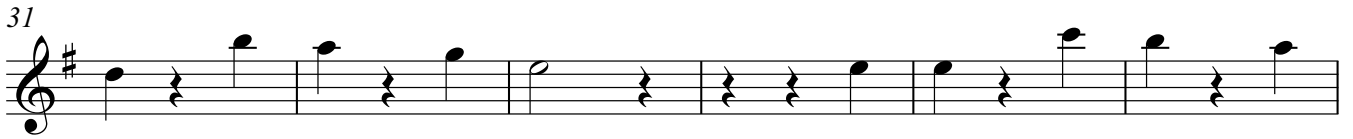
Jingle Bells

Schlagzeugklasse Roland Hasler



2

C-Stimme hoch



Bb-Stimme

Jingle Bells

Schlagzeugklasse Roland Hasler

♩ = 140



6

1. 2.

11

19

25



2

Bb-Stimme

31



37



43



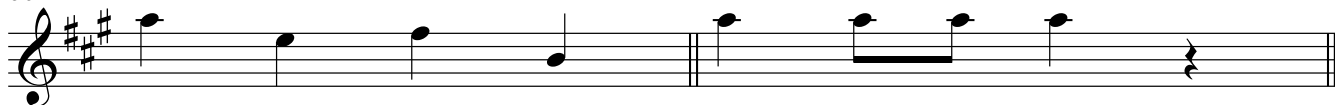
52



57



60



Eb-Stimme

Jingle Bells

Schlagzeugklasse Roland Hasler

$\text{♩} = 140$

6

11

19

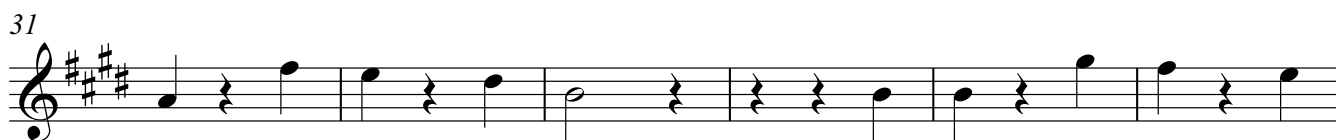
25

Detailed description: The image shows a musical score for the Eb-stimme of 'Jingle Bells'. It consists of five staves of music in treble clef, key signature of three sharps (F#, C#, G#), and 4/4 time signature. The tempo is marked as quarter note = 140. The score includes a first ending and a second ending. Measure numbers 6, 11, 19, and 25 are indicated at the start of their respective staves.

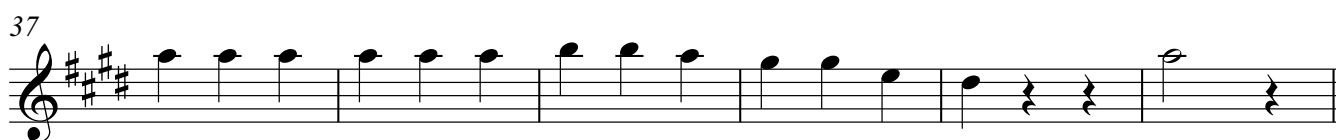
2

Eb-Stimme

31



37



43

$\text{♩} = 140$

4



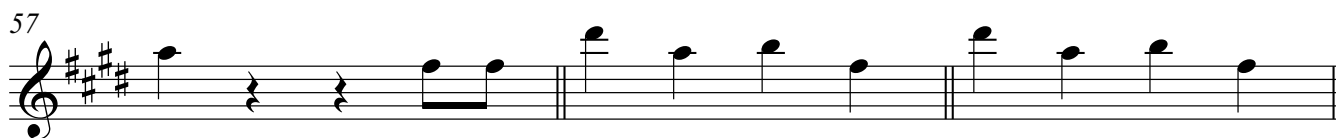
52

1.

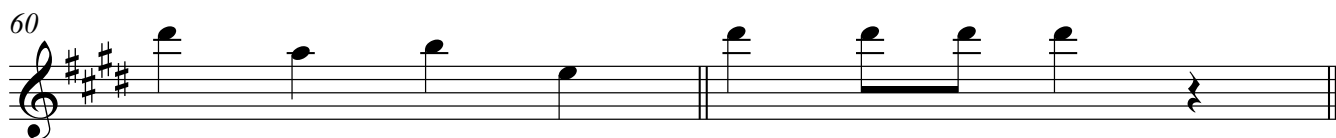
2.



57



60

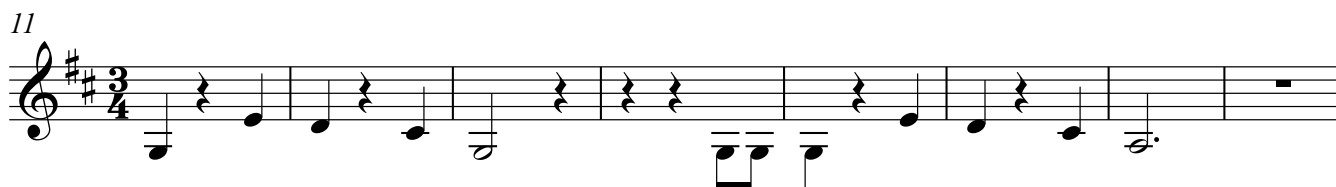
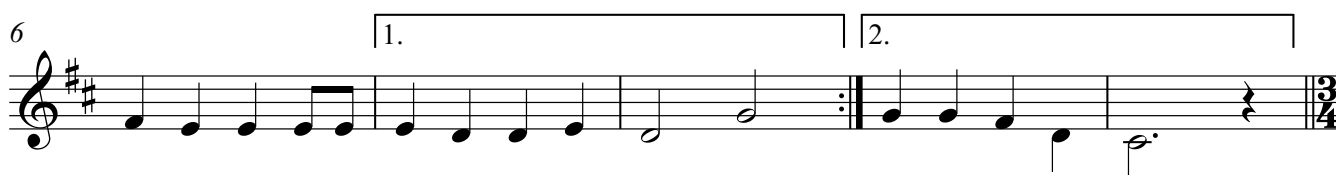


F-Stimme

Jingle Bells

Schlagzeugklasse Roland Hasler

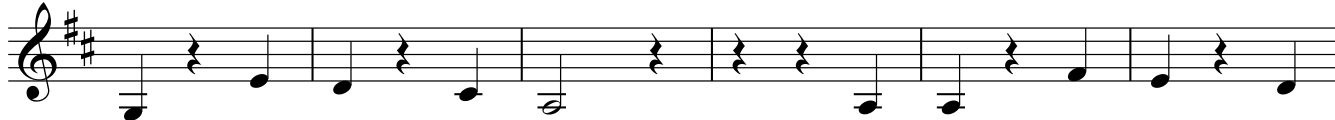
♩ = 140



2

F-Stimme

31



37



43

♩ = 140
4



52



57



60

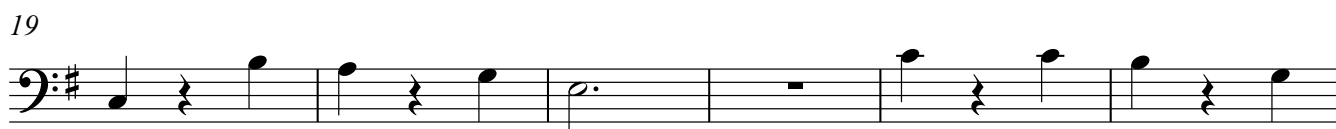


C-Stimme Bass

Jingle Bells

Schlagzeugklasse Roland Hasler

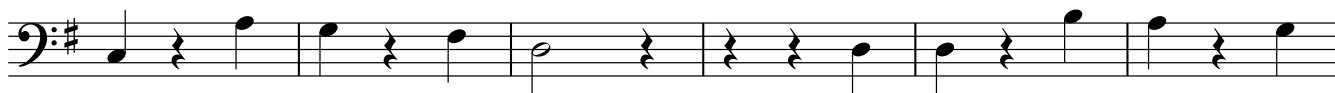
♩ = 140



2

C-Stimme Bass

31



37



43

$\text{♩} = 140$

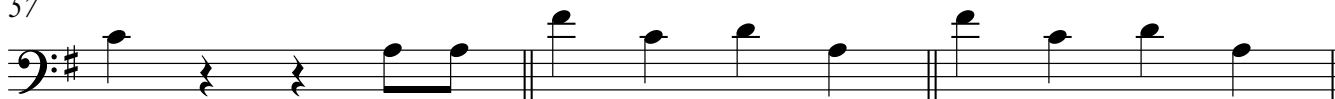
4



52



57



60



C-Stimme tief

Jingle Bells

Schlagzeugklasse Roland Hasler

♩ = 140

6

11

19

25

2

C-Stimme tief

